

SM-FOZ-41XX Side Entry Float Switch



The **SM-FOZ-41XX** family of single point side entry float switches are designed around the simple, proven and reliable reed switch and magnet principle.

The SM-FOZ-4105 and SM-FOZ-4120 are mounted from the inside and outside of the tank respectively whereas the SM-FOZ-4115 has a universal fitting, which expands on tightening, and can be mounted from either the inside or outside of the tank. All three versions can be used to trigger either a low level or high-level alarm.



SPECIFICATION

Liquid Types

Liquids compatible with the construction materials,
Typically: Diesel, Kerosene, Petrol, Water.

Materials

Float & Stem: Polypropylene.
Bush/Nut Polypropylene.
Washer Nitrile.

Environmental Ratings

Operating Temp: -20 °C to +80 °C.
Operating Pressure: TBC bar.

Electrical

Operation: N/O or N/C – user selectable.
Max Current: 1 A.
Max Voltage: 250V.
Max Power: 70 W.

Connections

Flying Lead Length: 600 mm of 22 AWG PTFE.

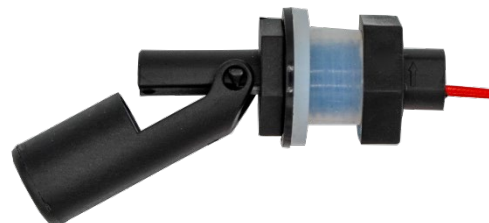
Dimensions

Part #	Mounting Hole	Max Insertion	Float Movement
SM-FOZ-4105	Ø16 mm	70 mm	35 mm
SM-FOZ-4115	Ø16mm for Internal mount Ø18.5mm for External mount	67 mm	35 mm
SM-FOZ-4120	½" NPT	70 mm	35 mm

SM-FOZ-4105 - Internal Fitting



SM-FOZ-4115- Universal Fitting



SM-FOZ-4120 - External Fitting

